

To Miss Louise K. House.

*by ******

*To Miss Maggie
found her friend*

I OFTEN SIGH IN SADNESS,

Written by

J. J. STEWART JR.

Composed for the

PIANO FORTE

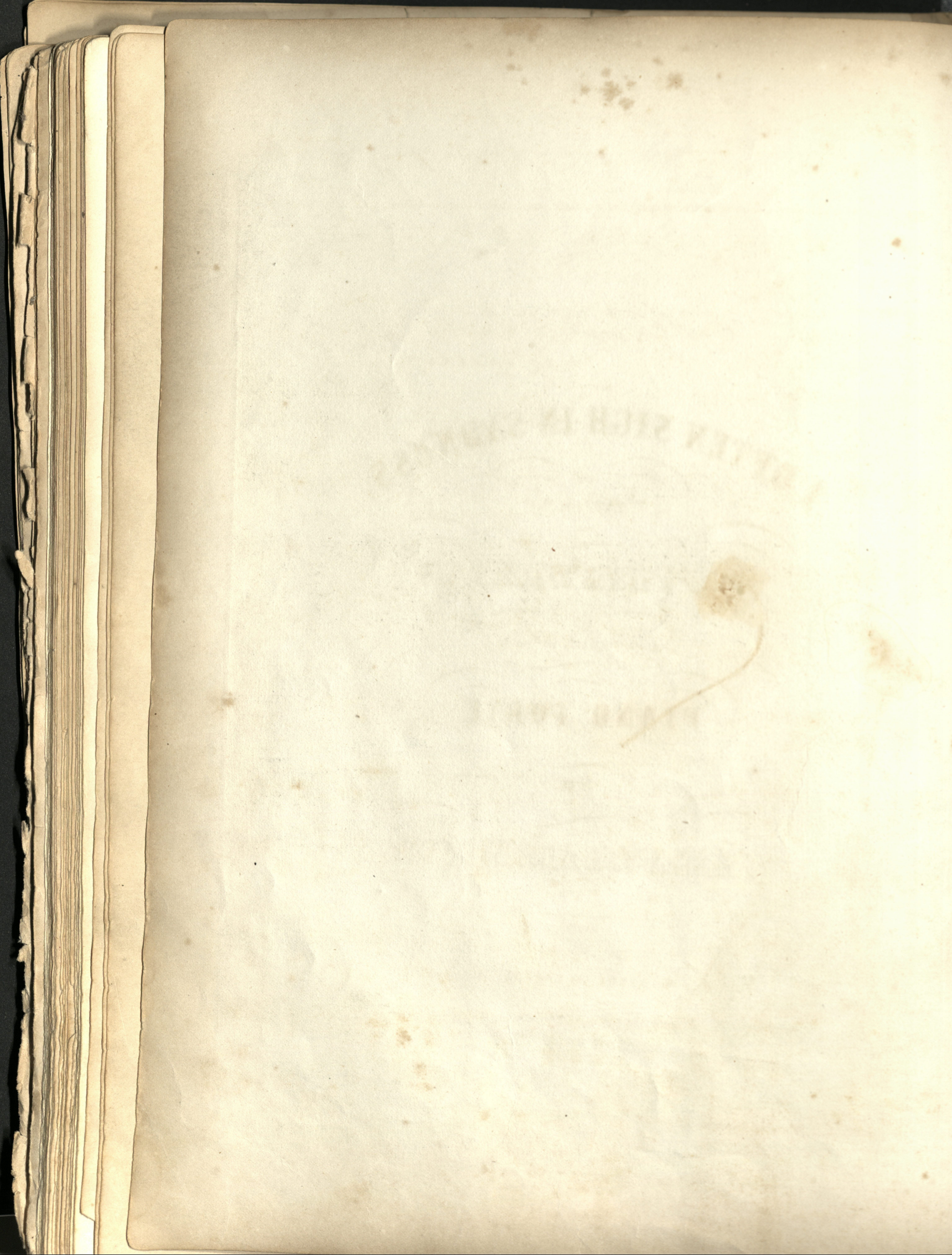
by

FRANK T. BARRINGTON.

Gillingham

Published by **HENRY M^c CAFFREY** *Baltimore.*

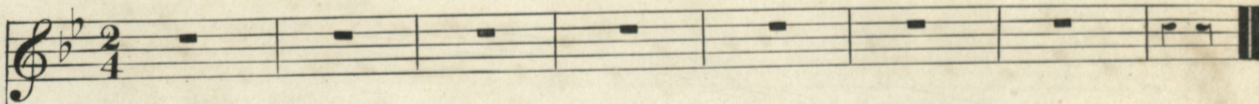
25 Cts. Net.

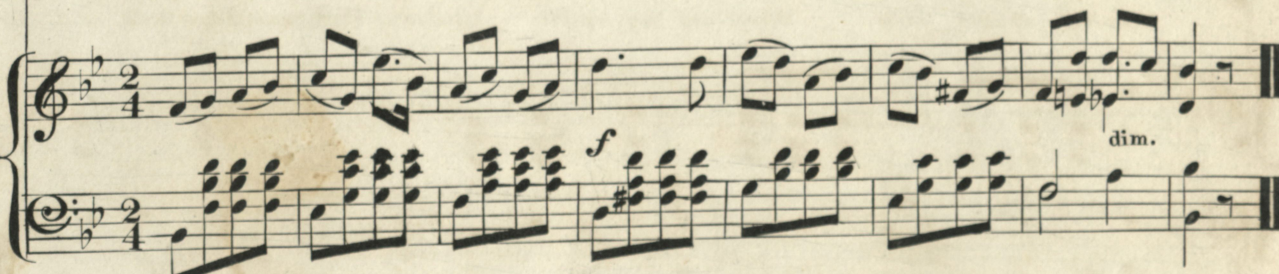


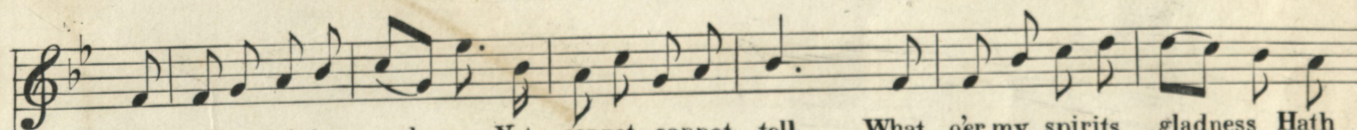
I OFTEN SIGH IN SADNESS

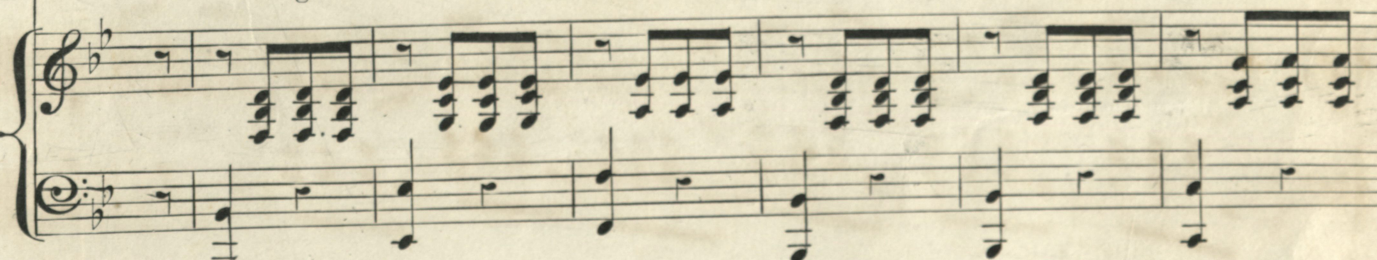
Poetry by J. J. STEWART Jr.

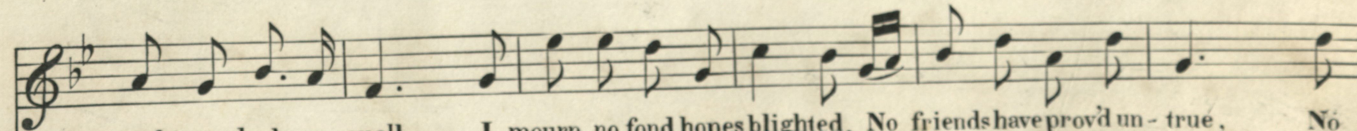
Music by F. T. BARRINTON

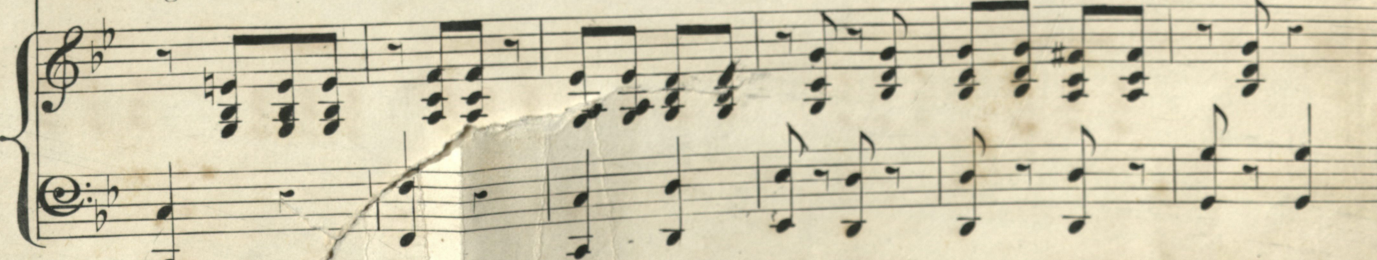
VOICE. 

PIANO. 


I often sigh in sadness, Yet cannot, cannot tell What o'er my spirits gladness Hath




wrought so dark a spell. I mourn no fond hopes blighted, No friends have prov'd un-true, No



passions un-re - qui - ted Hath taught my heart to rue; Yet, I often sigh in sad-ness, And

cannot, cannot tell What o'er my spirit's gladness Hath wrought so dark a spell.

Rall.

cres. *dim.*

I often sigh in sadness When most I should be gay, 'Mid festive scenes where mirth and glee Cheer

up life's toilsome way; Kind friends there round me gath - er Joy beams in ev - ry eye, I

smile, they think I'm hap - py And do not heed the sigh. Thus o'er life's stormy o - cean I

sail without a chart; I sigh for what - O can it be Com - panionship of heart?

cres. *dim.*